

WHY SHOEI?



DESIGN  TZ-R
QUALITY
PERFORMANCE

Shoei's TZ-R full face helmet offers a distinctive design and shape that combines fresh, diverse and aggressive graphics to target a variety of riders, from entry level to the most experienced.

The TZ-R's finish and safety performance are equivalent to Shoei's highest end models. Best of all, it has been packaged in Shoei's most affordable full-face helmet.

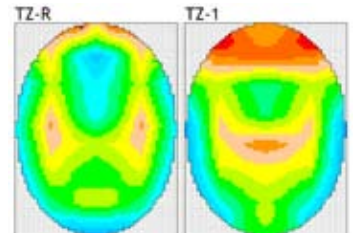
DESIGN



Shoei has developed a brand new, high grade shell design. Ventilation is integrated into the shell for a more streamlined look; Upper vents are combined with a molded shell

shape, creating a look with a strong sense of movement; The aerodynamically improved shape utilizes an air spoiler to reduce drag and lift when worn at high speeds.

QUALITY



Blue color on the above thermograph indicates cooler temperature.

To ensure Shoei's high standard of quality, both the shell and liner are subjected to repeated quality control inspections and impact absorption testing.

Wind tunnel testing is also used to determine optimal levels of ventilation, cooling and aerodynamic performance.

PERFORMANCE

UPPER AIR INTAKE

For improved cooling, upper air intakes correspond to any riding position. Fresh air flow is easily controlled by adjustable ventilation shutters.



LOWER AIR INTAKE

Enlarged lower intake vents allow ample amounts of fresh air flow to prevent fogging. Exhaust outlets at the bottom rear releases hot air and humidity buildup.



FITTING & REMOVABLE CHEEK PADS

The TZ-R uses three shell sizes and four corresponding liner sizes to achieve the perfect fit. Interior cheek pads and chinstrap covers are removable, washable and replaceable creating an easy, affordable custom fit system in multiple sizes.

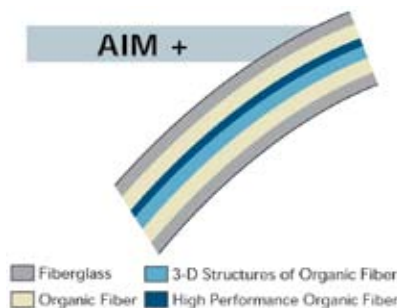
HELMET SIZE	XXS	XS	SM	MD	LG	XL	XXL
EPS LINER	XS		MD		LG	XL	
SHELL	MD				LG	XL	

HELMET SIZE		XXS	XS	SM	MD	LG	XL	XXL
CHEEK PAD	Standard	39mm	35mm	39mm	35mm	35mm	35mm	31mm
	Optional	33mm, 37mm, 41mm, 43mm/All sizes of cheek pads are interchangeable in all helmet sizes						



LIGHTWEIGHT

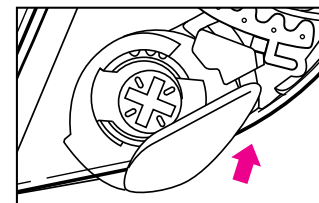
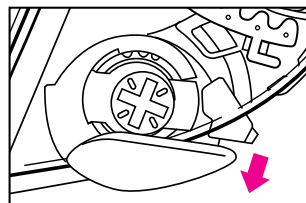
AIM+ (Advanced Integrated Matrix Plus Multi Fiber), a high-performance combination of new and advanced shell materials, produces a lightweight shell with increased rigidity and elasticity. This reduces inertia and impact in the event of an accident and provides a very comfortable ride.



AIM+
Advanced Integrated Matrix Plus Multi-Fiber

SHIELD & LOCK SYSTEM

The TZ-R includes the CX-1V shield, which is now wider to increase peripheral vision. It also features the Shoei QRBP quick release system, which holds the shield closed with the simple turn of a pre-set lever.



THE CX-1V SHIELD'S LOCKING MECHANISM